

RCU Kid's Club Newsletter

Spring '12



Movie in the Morning

Join RCU for a Movie Event Featuring:

Dr. Seuss' The Lorax

RCU, together with Micon Cinemas and New Richmond 8 Theatre will host RCU Movie in the Morning!

Saturday, March 3 • Doors open at 9 am

Movie runs from 10 am - 12 pm

Micon Cinemas • Chippewa Falls

OR

New Richmond 8 Theatre • New Richmond

RCU Kid's Club Members will see the movie and get a snack for FREE!

Seating is limited and reservations are required.

Reserve your spot online at www.rcu.org

beginning February 13 at 9 am.

Each Kid's Club Member is limited to 1 guest.

For example: Kid's Club Member + Mother = 1 guest.

Additional guests will pay a \$5 ticket charge.

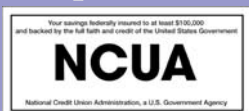
Concessions will be available at your own cost.



Dr. Seuss'
The LORAX



Do we have your email address? Find out about Kid's Club events through email. Visit the Kid's Club page of www.rcu.org to sign up!



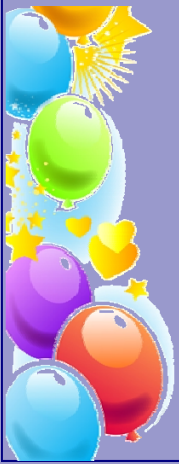
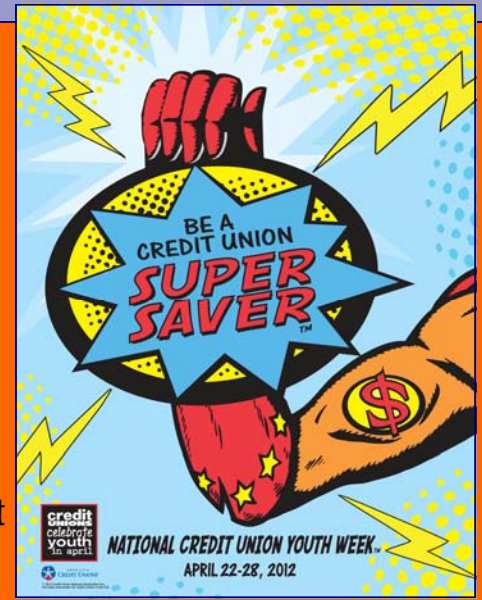
www.rcu.org

Get in the Savings Game with National Credit Union Youth Week!

RCU is celebrating National Credit Union Youth Week! Stop into any RCU office the week of April 22 through April 28 to register to win a Super Saver door prize! **And that's not all!** We'll also be giving TWO STAMPS on your Super Saver card for anyone who makes a deposit.

Bonus!

School \$ense Savers will receive TWO stamps when you save at school during the week! So remember your pouch!



Xcel Energy Kids Expo

Hey Kids! Join Savin' Sammy at the Xcel Energy Kids Expo on Sunday, April 1st at the Eau Claire Indoor Sports Center. The fun begins at 11:00 a.m. and ends at 4:00 p.m. RCU will be there, so be sure to stop over and visit Savin' Sammy!

Other entertainment will include:

- Inflatables
- Family Interactive Games
- Food
- Musicians
- Face Painting
- Live Entertainment
- Prizes
- Family and Youth Marketplace

Concessions will be available. The cost is \$5, kids 12 and under are free!

Let's Go Shopping!

Savin' Sammy went to the store to buy some juice. The juice costs \$1.79.

Which group below equals \$1.79?

A.

B.

C.

Answer: C

